



#



#

2020 IFMAR GT IC TRACK WORLD CHAMPIONSHIP

January 12-18 2020
HOMESTEAD RC RACEWAY
FLORIDA-U.S.A

STAGE 1 REPORT, May 10, 2019

BASIC INFORMATION

Homestead RC Raceway is located on the grounds of the world famous Homestead-Miami Speedway. The facility is inside the gates of the Speedway and offers all the speed and excitement of the bigger race cars.



The racing circuit is ideal for 1/10 scale, 1/8 scale and 1/8 scale GT fuel on road cars. The track has 13 left and right hand turns with a racing line length of 1,000 feet (over 300 meters).

EVENT INFORMATION

Name: IFMAR 1/8 GT IC TRACK WORLD CHAMPIONSHIP
Date: January 12-18 2020
National body: ROAR
Host: Full Throttle Raceway
Track: Homestead RC Raceway, Miami Florida – U.S.A.
Website: www.2020ifmargtworlids.com

HOST CLUB

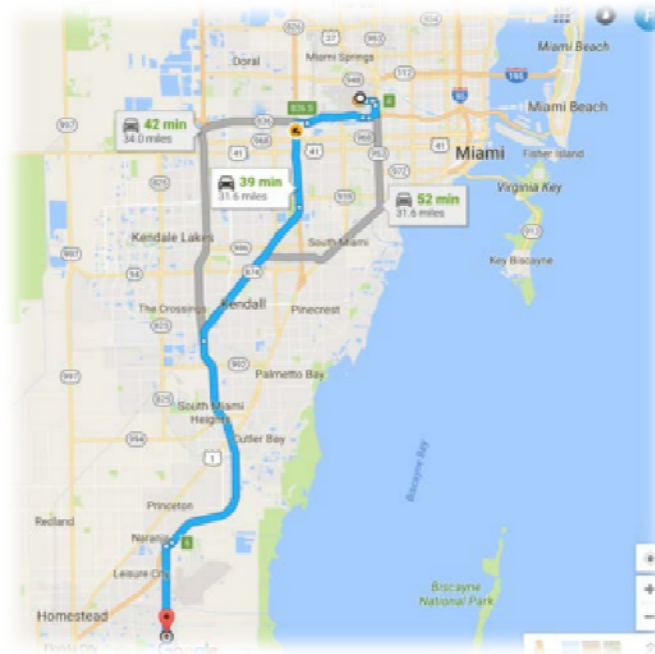
Full Throttle Raceway
Website: www.2020ifmargtworlids.com
Chairperson: George Martinez
Address: 1 Speedway Blvd. Homestead, FL 33035

OFFICIAL WEBSITE

Website: www.2020ifmargtworlids.com
E-Mail: info@2020ifmargtworlids.com

LOCATION

The Homestead RC Raceway is an outdoor track located in Homestead, Florida. Homestead is about 30 miles / 48 Kilometers south from the Miami International Airport. This airport is serviced by many airline carriers from all over the world. All major rental car companies are available from this airport



Miami International Airport serves as the primary international airport of the Miami Area. One of the busiest international airports in the world, Miami International Airport caters to over 35 million passengers a year. Identifiable locally, as well as several worldwide authorities, as MIA. Miami International is the United States' third largest international port of entry for foreign air passengers and is the seventh largest such gateway in the world. The airport's extensive international route network includes non-stop flights to over seventy international cities in North and South America, Europe, Asia, and the Middle East.

Miami is a seaport city on the Atlantic Ocean in south Florida. As the seat of Miami-Dade County, the municipality is the principal, central, and most populous of its metropolitan area and part of the second-most populous metropolis in the southeastern United States. According to the U.S. Census Bureau, Miami's metro area is the eighth-most populous and fourth-largest urban area in the U.S., with a population of around 5.5 million. For more than two decades, the Port of Miami, known as the "Cruise Capital of the World", has been the number one cruise passenger port in the world. It accommodates some of the world's largest cruise ships and operations, and is the busiest port in both passenger traffic and cruise lines. Like Cuba's ultra-capitalist offshoot, Miami is a sprawling, modern metropolis with a Latino pulse. One of America's most fashion-forward cities, its couture shopping, A-list clubs, renowned art galleries, and innovative cuisine draw some pretty famous faces, with paparazzi (or Secret Service) frequently in tow. But beyond the glitz, Miami is a safe, impressively clean city – the cleanest in

America, according to Forbes -- with a touch of small-town charm in neighborhoods like South Beach, Coconut Grove, and Coral Gables. Young families, jet-setters, retirees, and college kids buying six-packs with spare change unite, brave the humidity, and celebrate the Sunshine State in style. South Beach -- with its perpetual techno gliding from every cafe, shoe shop, Ferrari, and pizza parlor -- is lined with historic, neon-lit Art Deco hotels that range from posh, be-seen haunts like the Delano to far cheaper, small-scale digs like the Albion. From Mid-Beach northward, larger, family-focused spa retreats like the Fontainebleau or Acqualina line the beach. Moving inland, there are business-focused Downtown towers like the Four Seasons and historic golf resorts like the Biltmore in Coral Gables or the Marriott Doral Golf Resort in Suburban Miami.

DIRECTIONS FROM MIAMI AIRPORT

39 min (31.6 miles)



via Ronald Reagan Turnpike

37 min without traffic

⚠ This route has tolls.

Miami International Airport, Miami, FL

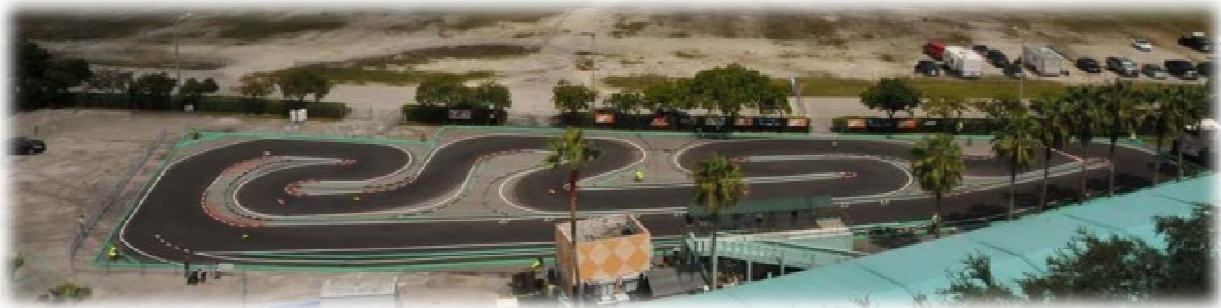
- > Get on FL-836 W in Miami from Miad Cir and NW 12th Dr
8 min (2.3 mi)
- > Take Exit 826 S, FL-874 S and Ronald Reagan Turnpike to SW 137th Ave in Princeton. Take exit 6 from Ronald Reagan Turnpike
24 min (25.2 mi)
- > Follow SW 137th Ave to SW 336th St in Homestead
8 min (4.0 mi)

Homestead-Miami Speedway, Homestead, FL

Directions from Airport and or Florida Turnpike: Leave Miami International Airport, get on the Florida Turnpike headed South (821) to Homestead. Once you are on the Turnpike continue South about 25 to 30 minutes and you will be approaching the Homestead area. Get off the Turnpike at Exit 6, which is the SW 137 Ave./Speedway Boulevard exit. SW 137 Ave. and Speedway Boulevard are the same road. Go South on this road for 4 miles/6.5 kilometers. You will see Homestead Miami Speedway as you approach. The complex is huge you cannot miss the buildings and grandstands. When you are real close to the Speedway buildings you will see SW 336 Street, make a left turn, drive past the main entrance, you will see Homestead RC Raceway on your right and follow signs for unloading and parking

TRACK & LAYOUT

The circuit is comprised of 13 left and right hand turns that is raced in a clockwise direction. The circuit width is 15 to 18 feet / 4.6 to 5.5 meters wide. The straightaway length with dogleg is 275 feet / 84 meters. The racing line circuit length is 960 feet / 292 meters. Outer track barriers are wooden 1 x 12 inches, inner lane barriers are 4 x 4 inches. The fastest 1/8 scales will average a 16 second lap time. The track surface is smooth asphalt that is in good condition. All barriers are anchored and should only require minimal maintenance if at all.



DRIVERS STAND

Drivers stand that is covered and elevated 8' / 2.4 meters. We have raced with as many as 15 drivers in a race before but 10 to 12 is much more comfortable. We have a ramp for people with disabilities.



PIT SPACE

We have covered pit space with ceiling fans and overhead lights that can accommodate more than 150 drivers. 110 volt electricity is available.



EXPERIENCE & STAFF

Homestead RC Raceway has hosted several stand alone events over the years such as the prestigious Pan Am 1/8 GT Grand Prix which attracts drivers from South America, The Caribbean, and the United States. A few ROAR Regional Championships, The 2018 US Nitro Cup. We also have held many FORGASS Series Races which strictly adheres and enforces ROAR Rules. Finally, we have hosted the 2011 IFMAR 1/8 On Road IC World and the 2018 IFMAR 1/10 Onroad IC World Championships .

We estimate that we'll have a total of 15 people working for the entire the event. Following are some of the names that we have already commitments with:

Timing and Scoring, Announcing, time management: : Julian Hope (with more than 20 years of experience) with 3 more people with experience in RC racing to help controlling the races.

Technical inspection: George Martinez (with over 20 years of experience) with 3 more experienced RC personnel.

Controlled Tires: We are estimating to have 4 experienced RC people for all the controlled tires management and logistics.

Track preparation and maintenance George Martinez with 2 more people will help with the track and pits areas.

TECHNICAL INSPECTION / CONTROLLED TIRES AREAS

Our tech area is in a secured covered area with ceiling fans, lights, and electricity. We have 4 tables that are 8' long with several chairs for the tech personnel more tables can be provided if necessary. We can provide 2 beam scales, graduated cylinders for measuring fuel capacity.

Tech inspections will be performed by extremely qualified personnel with years of experience in RC racing. For the controlled tires area we will have a closed area dedicated covered with ceiling fans, lights, and electricity. Wheel carts will be in use to move the cars from and to the track and we will have at least 4 people handling the controlled tires logistics for the entire event.

SPECTATORS

We have a designated spectator walkabout area that can accommodate a few hundred spectators with a concession stand nearby



FOOD/SNACKS

We will have an onsite concession stand with food, drinks, and snacks available at very moderate pricing. There are an abundance of restaurants and lots of fast food Restaurants within a 5 mile radius from the race track



BATHROOM FACILITIES

We have large permanent men and women bathrooms with running water, sinks and paper towels available.

PARKING & TRANSPORTATION

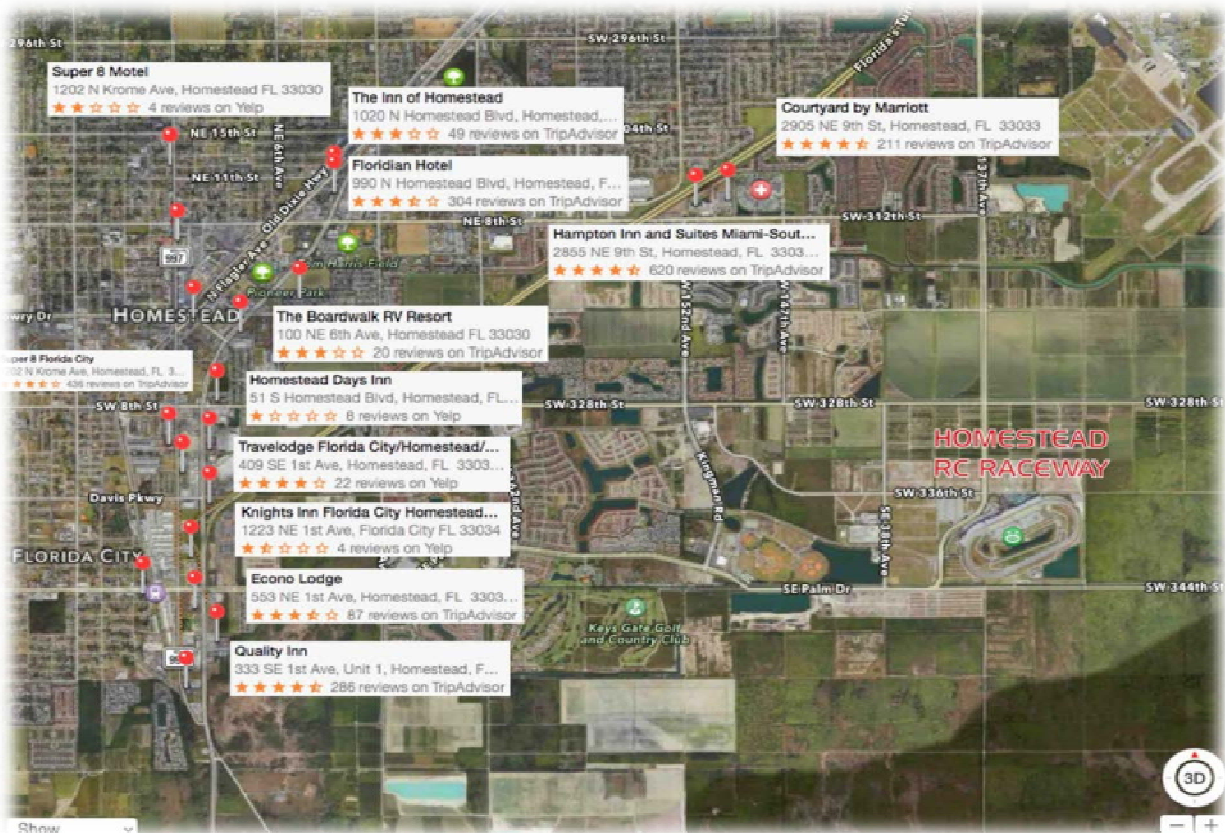
We have several acres of parking area. We can accommodate handicap parking. Overnight parking for RV's and Motor homes is allowed, no hookups and must be self contained. Dumping station is within 2 miles. Shuttles are not available to or from the motels/hotels.

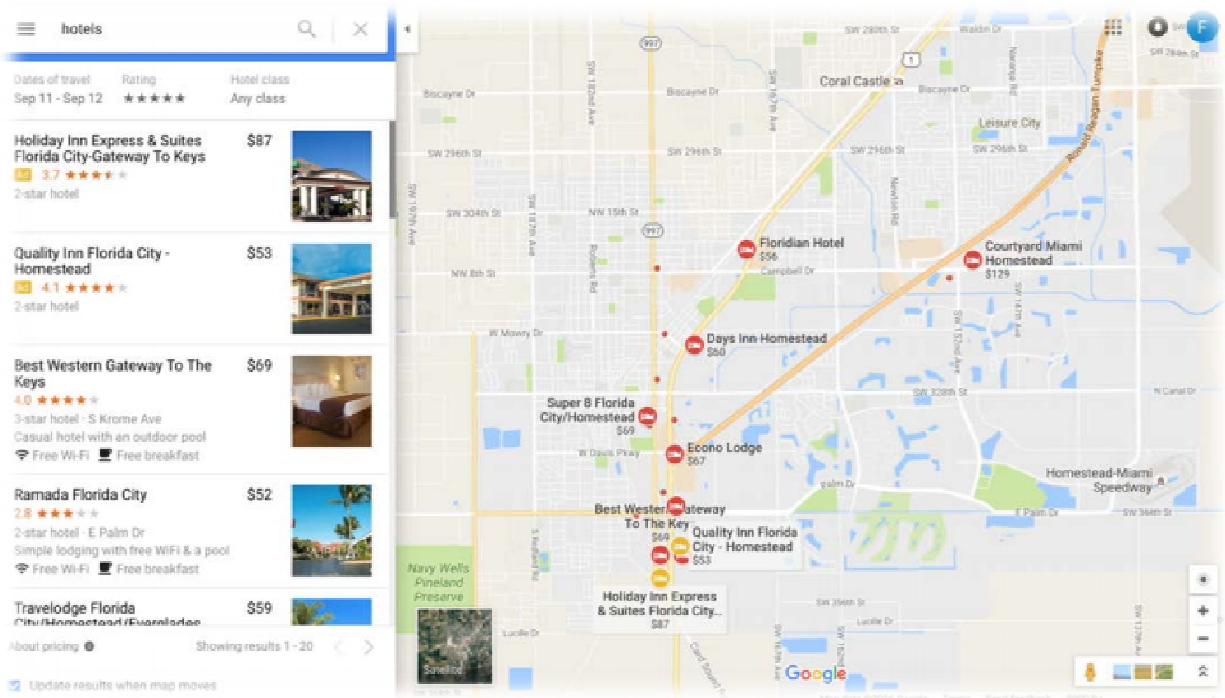
TIMING and SCORING

Our Timing and scoring boot is equipped with everything needed including air conditioning. We have LiveTime RC software. We have Mylaps transponder decoder box. We have a redundants loops.



MOTELS, HOTELS & AIRPORTS





CAMPING / MOTORHOMES / TRAVEL TRAILERS

Overnight parking for RV's and Motor homes is allowed, no hookups and must be self contained. Dumping station is within 2 miles.

